

# Newsletter

Week 7, Term 1  
12th March 2024

Ko Tarahāoa me ona whānau kia whakaruruhau nga tapuwae ki te taumata.  
Ko te tapuwae te hikoianga i te ao.

Kia ora e te whanau,

We look forward to the Flower Show this Thursday, as an opportunity to showcase children's artistic and creative skills both at school and through the home-based activities.

We have sent out information in previous ClassDojo posts, and below is a bit more of an explanation, particularly for newer parents who may not have been involved before. "Experienced" parents will also note we have started earlier and finish later. Feedback from previous years is that we need to keep the displays up for longer.

### **Sand saucers**

On Wednesday morning children bring along a named saucer, and bag/container of any flowers or cutting they would like to use (we always have plenty left over if children don't have any). Children head over to the domain at morning tea time, where their creations are put together and then we lay them out in the hall. Any family or friends free to help from 10.15-11.15am are welcome to come along to the hall.

### **Thursday morning**

Parents can drop their child off at the Woodbury Hall anytime from 8.45am, with the creations / items they have brought from home. Bring these into the hall, and find the category and child's name card to put the item beside (Y1-Y2 Yellow card, Y3-4 Green card, Y5-Y6 Orange card). Staff will be available to assist children/parents if needed. Children then play in the domain playground, and parents are free to leave.

Following this we have our judges wander around and give out their awards.

### **Thursday afternoon**

Children look around the exhibits in the morning. Parents and the public are welcome to come and have a look through the hall, from 1.00-2.15pm.

Children will be brought back to the hall at 2.15pm

From 2.15pm parents will be able to take their child, and their items, home.

All items need to be taken from the hall by 2.30pm, so we can clean up.

Ngā mihi,



## **NEW STARTER**



Sophie Veaux has joined us from Geraldine Kindy.

## **REMINDERS**

Bulb fundraiser is due back to the office by 20th March

# Triathlon

On Friday 8th March we sent along a boys and a girls team to the South Canterbury Triathlon, held on a challenging course at CBAY and around Ashbury Park. As in previous years, the children impressed us all with their attitude and effort on the day - ka pai tamariki!

Well done to Sasha (8th), Molly (9th) and Sophie (34th), who also finished 4th overall as a team.

Well done also to Arthur (11th), Archie (19th) and Louen (25th), who as a team finished a very impressive 2nd in all of South Canterbury.



# KiVa

Teaching staff are looking forward to implementing our new KiVa Anti-Bullying programme throughout the school. Previously we have had systems in place for dealing with instances of bullying or other harmful behaviour, that included a restorative approach and positive ways of resolving conflicts. We had looked a Ministry of Education programme, but do not like the concept of children behaving a particular way only because they received a playground “token” or some other type of reward. KiVa instead focuses on educating children (through explicit lessons teachers will deliver) on what bullying is, how this type of behaviour can make all those involved feel, how to enable students to end bullying situations, and importantly show children that as bystanders you are able to do something positive to help resolve a harmful situation - as children’s peers intervening is proven to be a powerful way of stopping bullying behaviour . The programme also gives staff a process to follow through and monitor behaviour within our school. See the attached sheet for more information around this programme.



## KiVa FAQ

### What is KiVa?

KiVa is a research-based tool to prevent and reduce bullying problems. Supporting Years 2-10, KiVa has been proven to make a difference and focuses on teaching our tamariki respect and acceptance of all students, their culture and identity.

### What is bullying?

Bullying is defined as harmful, deliberate, and repeated behaviour, targeted towards a person who is perceived as less powerful. Bullying has many negative outcomes and some of these can be lifelong. We know that bullying occurs at all ages and across all areas of society, but often a child's first experience of this behaviour happens in school. According to the OECD, New Zealand is known as one of the worst countries in the world for reported cases of bullying. It is a serious problem for our tamariki, but we can work together to prevent bullying.

### KiVa in schools

The KiVa programme consists of 10 lessons and activities conducted over the school year. The lessons incorporate discussions about bullying and respecting others. KiVa is a whole school approach and has three main aspects: **prevention, intervention and monitoring**. The goal of the work done at the classroom level is to educate students about their role in stopping bullying. Putting an end to bullying becomes possible when a shared sense of responsibility is developed and group norms are changed.

### The benefits of KiVa

With KiVa's whole school approach, the benefits extend beyond the impacted students to the entire school and the wider community. Students feel more empowered with skills and confidence to address bullying behaviours and the programme promotes respect and a positive peer culture. In New Zealand, over 60 schools and kura currently use KiVa to address bullying behaviour and they have reported a 25% reduction in bullying within the first year alone.



Do you have more questions? Get in touch with one of our KiVa representatives today at [kiaora@elephanttrust.org.nz](mailto:kiaora@elephanttrust.org.nz)



## **TERM DATES**

Please find a [link here to the Term 1 calendar](#) for 2024. Note that most dates are confirmed but there may be some changes.

### **Week 7 (11-15 March)**

- Flower Show on Thursday 14th March at the Woodbury Domain

### **Week 8 (18-22 March)**

- Teacher Only Day Friday 22nd March (Teacher literacy professional development)

### **Week 9 (25-29 March)**

- Friday 29th is Good Friday Holiday

### **Week 10 (1-5 April)**

- Monday 1st and Tuesday 2nd April are Easter Holidays

### **Week 11 (8-12 April)**

- Friday 12th April is the last day of term, with the Year 6's leading an ANZAC Service to finish the day.

## **SWIMMING POOL**

This Friday will be the last day for students to bring their togs to school.

Can any keyholders please also return these to school on Friday, or next week. The pool will be out of use from this Friday, as the salt-converter and heat pump will both be turned off.



## Junior Registrations 2024

Calling all 5-13-year-old girls and boys for the 2024 season, please go to [sporty.co.nz/viewform/255959](https://sporty.co.nz/viewform/255959) to register and pay online

**\$60.00 SUB**

Each registered player receives a hoody, mouthguard and game day kit bag

EMAIL: [geraldinejabrugby@gmail.com](mailto:geraldinejabrugby@gmail.com)

## CLUB OPEN DAY

GRFC CLUBROOMS ON GEORGE STREET

**Saturday 23 March  
from 11am**

Senior preseason games & fun for the kids

**BOOT SWAP/DONATE**

Bring your old boots, make them go another season



**Saturday 16 March, 2024**

*Mark this on your calendar now – an event NOT to be missed*

### Potato in a Bucket Competition

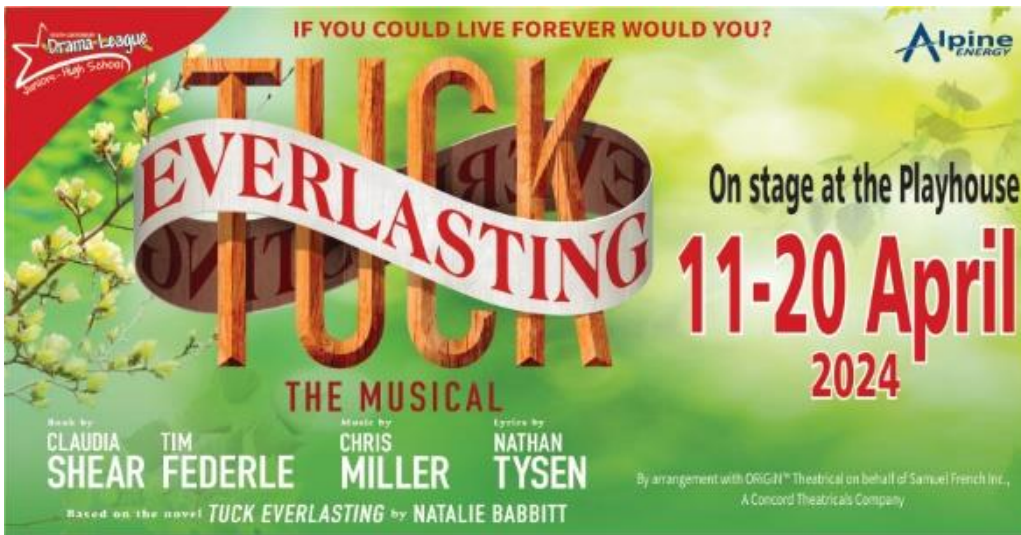
Get your entry now for this 100 day crop

Great fun

\$10

Collect your numbered bucket and seed potato from Woodbury Store Café Ltd  
Or email [woodburyharvestgala@gmail.com](mailto:woodburyharvestgala@gmail.com) for more information or to arrange drop off/collection

Cellphone 0274807698



The kids are allright!

Autumn evenings are closing in and have we got a treat for you!

**Tuck Everlasting the musical** (directed by Alice Sollis) – perfect for the whole family age 7 plus – takes you to the magical world of late 1800s, fictional small town America.

The South Canterbury Drama League have assembled a talented cast of local teens to bring to the stage a stunning, warm-hearted adventure story with beautiful music, terrific song and dance (folk/pop/rock mix) and a message to enjoy the life you have.

What's it about?

Tuck Everlasting follows eleven-year-old Winnie Foster who yearns for a life of adventure beyond her white picket fence. She gets more than she could have imagined when she becomes unexpectedly entwined with the Tuck Family. When Winnie learns of the magic behind the Tuck's unending youth, she must fight to protect their secret from those who would do anything for a chance at eternal life. As her adventure unfolds, Winnie faces an extraordinary choice: return to her life, or continue with the Tucks on their infinite journey.

Book at [iticket.co.nz](http://iticket.co.nz) or pop into Newmans MusicWorks on Stafford Street in person.

Just \$35 a ticket, Tuck Everlasting opens 11 April to 20 April.

Directed by Alice Sollis with musical direction by Ella Thomas and choreography by Jo Williams.

Hi Woodbury Community,

The RSA is planning for this year's Woodbury Anzac Service, which will be 10:15AM on Thursday 25 April 2024. I am looking for 2 readers to read the Roll of Honour. Usually we have students in year 5 or 6. Please let me know if your child would like to do this. I need to have names by early March.

Thanks,

Alex Peacock mobile: 021659796



ANZAC DAY  
LEST WE FORGET  
25 APRIL

**CENTRA MOTOR CO**  
**GERALDINE MULTI CHALLENGE**  
Run - Walk - Bike

**SUNDAY 17 MARCH 2024**

Presented by the  
**Geraldine Lions & Bike Geraldine**

[www.geraldinemultichallenge.co.nz](http://www.geraldinemultichallenge.co.nz)

Logos: Lions Club, Bike Geraldine, Centra Motor Co.

## GERALDINE MULTI CHALLENGE

Now a 'must-do' annual fixture for recreational and competitive athletes alike, the Geraldine Multi Challenge, organised by the Geraldine Lions and Bike Geraldine, takes in purpose-built single track, the Orari River trails, quiet back-country roads, and local farmland. Offering mountain bike, run and walk events, there are options for all ages and abilities. All proceeds from the event benefit local charities.

### EVENT OPTIONS

#### MOUNTAIN BIKE EVENTS

**52km Geraldine MTB Challenge** - a challenging race for more competitive riders, this option has some hills and includes a combination of river and farm tracks, backcountry roads and awesome single track.

**32km Intermediate MTB Challenge** - still a good workout, this shorter race is alongside the Orari River on purpose-built tracks including some easy single track riding.

**18km Recreational Fun Ride** - designed for family groups and those who want to enjoy their ride without the competitive element, this event utilises the 4WD tracks and easy single track alongside the Orari River.

**32km E-Bike Race** - 2 Categories, Men & Women. With a minimum age of 18yrs. The race will start at a different time to the other Mountain Bike races and it follows the same route as the 32km intermediate MTB challenge.

#### RUN / WALK EVENTS

**21km Half Marathon** - mainly off road, a picturesque and predominantly flat route along the Orari River trails which will suit both competitive and social runners.

**13.8km Run Challenge** - again predominantly off road along the Orari River trails - a flat, sheltered and picturesque route amongst the trees.

**5.8km Fun Run/Walk** - Perfect for first timers or those who just want to go out and have some fun. Give it a go, we're sure you'll be back for more next year.

#### TIMES FOR RUN / WALK EVENTS

7:00am - 8:00am  
Registration for the RUN and WALK events.

8:15am  
Run and Walk Race briefing which everyone MUST attend.

8:30am  
Run and Walk events start.

#### TIMES FOR MOUNTAIN BIKE EVENTS

9:00 - 10:15am  
Registration for the Mountain Bike events.

10:15am  
Mountain Bike Race briefing which everyone MUST attend.

10:30am  
Mountain Bike Race starts

### FEES AND REGISTRATION

Enter Today!!  
Early Bird pricing for entries received up until midnight on 5th March 2024. Entries after that date will incur a \$10 late fee (children under 18 years exempt).  
Your entry fee includes a delicious burger/sausage from the Lions BBO and inclusion in the spot prize draws.

**MAJOR SPOT PRIZE** is a new bike generously donated by **THE CYCLERY Timaru**.

To enter visit [www.geraldinemultichallenge.co.nz](http://www.geraldinemultichallenge.co.nz) or find us on Facebook.

### RACE INFORMATION

**Cancellation Policy** - In the event of adverse weather and the event is cancelled, there will be no cash refunds of entry fees. These will be transferred to the 2025 event.  
Notification of the cancellation will be on Radio Port FM from 7am on the day and on our Facebook page.

---

Logos: Adair's Veterinary Services, North End Motors, Geraldine, BRS, Woodley's, Fulton Hogan, Frontrunner, Export, Signs, The Village, Marsden Engineering, Geraldine Physiotherapy, Barker's, Geraldine Glass, Harcourts, Scarlett, Roommate Cabins, 4PeakHealth, Ecomist.

**Geraldine Home & Kindergarten** Presents **THE GREAT LAUGH** Comedy Show

Featuring **Tarun Mohanbhai**, **Jamie Bowen**, **Al Bolland**, **MC Mike Boon**

Tickets available online at [eventfinda.co.nz](http://eventfinda.co.nz)

23rd March 2024  
Doors open at 6.30pm  
Bar with Effpos  
Geraldine High School Hall

**Sponsors**

GOLD	SILVER	BRONZE

**Parent Help** for Parent and Family Support

**FREE PARENTING HELPLINE** [www.parenthelp.org.nz](http://www.parenthelp.org.nz)  
**ALL ISSUES ALL AGES** **0800 568 856**

**FIVE WAYS TO WELLBEING**

- CONNECT**: TALK & LISTEN, BE THERE, FEEL CONNECTED
- GIVE**: Your time, your words, your presence
- TAKE NOTICE**: REMEMBER THE SIMPLE THINGS THAT GIVE YOU JOY
- KEEP LEARNING**: EMBRACE NEW EXPERIENCES, SEE OPPORTUNITIES, SURPRISE YOURSELF
- BE ACTIVE**: DO WHAT YOU CAN, ENJOY WHAT YOU DO, MOVE YOUR HOOD

INTRODUCE THESE FIVE SIMPLE STRATEGIES INTO YOUR LIFE AND YOU WILL FEEL THE BENEFITS.

Mental Health Foundation  
mauri iā, mauri ora  
[www.mentalhealth.org.nz](http://www.mentalhealth.org.nz)

(Disclaimer: We in no way endorse or otherwise any notice placed in this section. It is purely an information section for public notices.)