

7 October 2025

Tēnā koutou katoa,

Welcome back students and families, to the last term of 2025. Term 4 is always an exciting time, we have some fun programmes of learning and school activities planned for the children. Please check through the calendar at the end of this newsletter and make note of the dates coming up.

Mike de Joux
Tumuaki / Principal

COMMUNICATION

This term all our communication will be carried out via HERO or email. When we post on HERO, we will put a message on our old messaging system (Classdojo) to remind parents to check their HERO app or emails. This is just to ensure messages are getting checked. From Week 3, we will no longer be using the ClassDojo app.

Please [follow this link to the HERO website](#), with step-by-step instructions for signing in. In order to work for parents / caregivers, we need email addresses for each user.

Please contact the office if you are having any issues with the HERO app and we will be able to help.

SCHOOL PHOTOS

This Thursday, 9th October we have our school photos.

Children must come to school wearing their blue Woodbury shirt and preferably navy blue shorts / leggings.

Pre-school siblings can come along at 9.00am if you would like family photos, please let the office know if you intend to do this. Kolourcare also take photos of siblings together at school, which parents can purchase if they like.

PET DAY

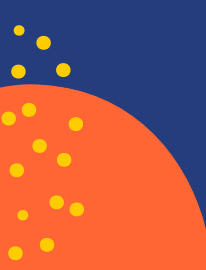
Please find attached here a link to information around our upcoming Pet Day in Term 4, which we hold every second year.

This information will hopefully give those who haven't been before a good idea of what happens on the day. We also need parents to fill in this google form link, which will let us plan for numbers on the day.

We will also send out reminders and information in the week prior to the event.

[Pet Day Info Sheet](#)

[Register a pet here for Pet Day.](#)



WORKING BEE

A massive thank you to the parents who came along to help out with the working bee towards the end of Term 3. This saves us a considerable amount of both time and money in maintaining our grounds, and also getting a few projects sorted. It was great to be able to get the garden area developed further, get trees trimmed around the school and over 250 grasses / shrubs planted around the bike track area.



FLAVA & TE REO O TE WIKI

We were incredibly proud of our students who took part in the FLAVA festival, as part of a combined Kapa Haka group with Geraldine Primary School. This is the first time we have entered, and the children were amazing on stage. This group also performed at the High School in the last week of term, as part of celebrations around te reo o te wiki. We hope to have after school kapa haka available again for students to take part in, in 2026.



PEAK AWARD WINNERS

Well done to these students, who received PEAK Values awards at our assembly last week. These are for Perseverance/Manawanui, Empathy/Aroha, Acceptance/Whanaungatanga, and knowledge/Mātauranga.



NEW STUDENTS

This term we have welcomed three new students. Joining Pekapeka is Cora, and Noah.

Joining HTK-B is Clementine who has recently moved to Woodbury



TERM 4 NOTICES

A reminder that children need to bring their red hat, drink bottle, and apply sunscreen (there will be some available in class as well).

We require all children to wear their hat in order to be out in the sun. We recommend that if your child takes their hat home at the end of the day, it is immediately put into their schoolbag so as to be accessible the following school day. Students without hats will still be able to play with friends or do an activity at break times, but this will need to be in the covered decking area where there is shade.

ATTENDANCE

Under new guidelines, schools are required to follow a Stepped Attendance Response (STAR) plan. As part of this, we track student attendance and monitor those students with irregular attendance. We may communicate directly with families, if a child has regularly missed more than 80% (average 1 day per week) of their schooling. You can also see your child's attendance on the HERO app, and on mid and end year reports.

We are well aware that there are often a variety of reasons for legitimate absences, the most common of which is illness. This year's illnesses have been particularly bad, not only for the number of children affected but also the length of time taken for children to recover. We also have a number of families who, due to the nature of their jobs or other circumstances, take term-time holidays with their families.

STRATEGIC PLANNING

[Attached here](#) is our current Strategic Plan, which we are in the process of developing for the next 3 years.

We would love some feedback from parents going forward. [Please follow this link](#) to a survey, if you would like to contribute your thoughts. We have kept the survey nice and simple - "What is going well for your child and whānau", "What do you believe could be a future focus (within the next 3 years, and beyond)".

CYCLEWAY

We have been given an update on the cycleway that is to be built, from Geraldine to Woodbury. This was originally due to start earlier this year, but we have been told it is now due to start early October. Once this is underway, there may be slight disruptions on Woodbury Road.

MEASLES

We recently received the following advice from the Ministry of Education / Ministry of Health.

Measles cases in Aotearoa

Recent measles cases linked to overseas travel have been reported in Te Tai Tokerau and Queenstown. Cases were active in the community while infectious and there is a risk of measles circulating there, and more widely in Aotearoa.

Points to share with parents, caregivers and the school community:

- Measles is very contagious and can make people of any age very sick.
- Watch for measles symptoms – fever, cough, runny nose, sore eyes and a blotchy rash.
- If anyone in your whānau has measles symptoms keep them home and contact a doctor or Healthline urgently on 0800 611 116.
- Vaccination is the best protection from measles. Check all whānau are immunised.
- Anyone closely exposed to measles who has not received two MMR vaccinations cannot attend their school | kura for at least eight days.

[Measles immunity – Health New Zealand](#)

[Measles, mumps and rubella \(MMR\) vaccine – Health New Zealand](#)

[Measles: Locations of interest in Aotearoa New Zealand – Health New Zealand](#)

TERM 3 HIGHLIGHTS

During the last week of term 3 we split children up into mixed year groups, where they rotated around a range of different activities incorporating Māori language and art.



HOME & SCHOOL COOKBOOK

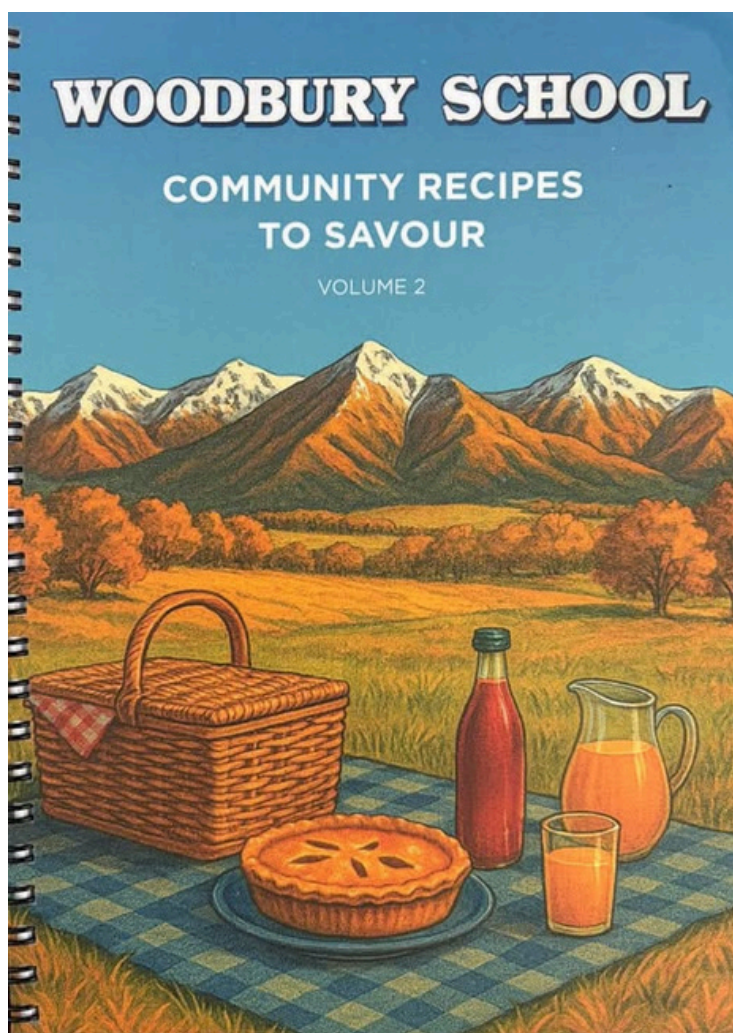
Exciting news, team Woodbury School!

We are pumped to let you know that the cookbook fairies have completed the incredible task of gathering, publishing, proof reading, testing, editing, photographing, and the list goes on! The draft has been passed which means that the Woodbury School Cookbook Vol 2, has gone to print!

Pre-orders are now open!. Follow the link below which will take you to shopify. Once pre orders close the price will rise slightly so now is your chance to secure for \$25.

Can we all also please give those cookbook fairies a huge round of applause Ange Melanie Stazirae & Kate are the fairy godmothers with plenty of other fairies behind them. Huge appreciation team.

[Link to Woodbury Home & School Cook Book Order](#)



TERM 4 DATES

Attached here is a link to the Term 4 calendar

Week 1 (6 - 10 October)

- On Thursday 9th October we have our school photos. Younger siblings are welcome to attend, with their photos with older brothers / sisters taken at 9.00am.

Week 2 (13 - 17 October)

- Friday 17th is our Pet Day, at the Woodbury Domain

Week 3 (20 - 24 October)

- Monday 20th at 7.00pm is a board meeting
- Thursday 23rd October is currently set down potentially as an NZEI (teaching union) strike day, and as such there will be no school on this day. Note that a strike notice is yet to be issued, and if there is an agreement between the union and Ministry prior to this date, the strike will potentially be called off. We will keep families informed as soon as we receive any information.
- Friday 24th October is a Teacher Only Day focussing on the new Maths Curriculum

Week 4 (27 - 31 October)

- Monday 27th is the Labour Day holiday
- Tuesday 28th October, After School Swimming with Clare Connolly begins. This goes every Tuesday and Thursday afternoon for 4 weeks.
- On Wednesday morning all Year 3-6 students take part in the fun "Top Teams" event, which we host and invite Carew Peel Forest to join us for.
- On the Thursday our Year 6 students who are attending Geraldine High School next year, head along for a ropes challenge and orientation activity, as part of our transition to high school programme.

Week 5 (3 - 7 November)

- Thursday 6th our Year 6 students are doing some planting for ECAN along the Orari River. We also have "Gumboot Friday", as a fundraiser for this mental health initiative, on this day as the Friday is athletics.
- Friday 7th November is our athletics event, at the Geraldine Domain, combined with Carew Peel Forest.

Week 8 (24 - 28 November)

- Monday at 7.00pm is a BOT mtg
- Tuesday 25th November is South Canterbury Athletics, for selected students
- Friday 28th November is a transition visit for those Year 6's heading to Geraldine High School in 2026.

TERM 4 DATES

Week 9 (1 - 5 December)

- Year 4-6 swimming starts. This is during class time, every day for 2 weeks at the Geraldine Pool, with trained CBAY instructors.

Week 11 (15 - 17 December)

- Tuesday at 1.00pm is our end of year prizegiving at the Woodbury Hall. End year reports are also out on this day.
- Wednesday 17th December is our last day, with students finishing at 12.00pm. Note: we actually completed our required number of school days on the Tuesday. Wednesday morning is a “clean-up” day for putting away resources, equipment, etc... Children who do attend on this day can help out, or have a last day of the year to play with friends!

COMMUNITY NOTICES

Geraldine Athletics **Club**

*(affiliated with Athletics NZ,
Canterbury Athletics and Mid South
Sub Centre)*



Registrations opening soon!!!

Athletics training is a fun way to maintain fitness for winter sports, have great fun and meet new friends on our warm summer evenings. Enter competition meets or just come to learn new skills

Our 2025/26 season will begin on 8th October,
5.45pm Geraldine Domain Oval.

Training nights will be Wednesday nights from
5.45pm at the Geraldine Domain on Hislop St.
Athletes welcome to register from age 6 - 100+ years (as at
31st Dec 25)

Have you thought about Coaching?

We are always on the lookout for new coaching team members to support our Athletes. If you would like to join the team in any way please contact the Club:

Jo 021 2211234; Corey 027 693 5489

or message us on Facebook

For more information on our Club visit:

W:<http://www.sporty.co.nz/geraldineathletics>

F: <https://www.facebook.com/geraldineathletics>